

A Scuba Galaxy in the Protocluster Around 53w002 at $z = 2.4$

Ian Smail – University of Durham

R. J. Ivison – Royal Observatory

D. G. Gilbank – University of Durham

J. S. Dunlop – University of Edinburgh

William C. Keel – University of Alabama

K. Motohara – University of Tokyo

J. A. Stevens – Royal Observatory

Deposited 09/20/2018

Citation of published version:

Smail, I. et al. (2003): A Scuba Galaxy in the Protocluster Around 53w002 at $z = 2.4$. *The Astronomical Journal*, 583(2). DOI: <https://doi.org/10.1086/345474>

A SCUBA GALAXY IN THE PROTOCLUSTER AROUND 53W002 AT $z = 2.4$

IAN SMAIL,¹ R. J. IVISON,² D. G. GILBANK,¹ J. S. DUNLOP,³ W. C. KEEL,⁴
K. MOTOHARA,⁵ AND J. A. STEVENS²

Received 2002 August 21; accepted 2002 October 9

ABSTRACT

We analyze an 850 μm Submillimetre Common-User Bolometer Array (SCUBA) map of the environment of the $z = 2.39$ radio galaxy 53W002, which has been shown to reside in an overdensity of Ly α -detected galaxies. We identify four luminous submillimeter sources within a 2/3 (1.2 Mpc at $z = 2.39$) diameter area around the radio galaxy (which itself is a weak submillimeter source). We employ a 1.4 GHz map to accurately locate the counterpart of one of these sources, SMM J17142+5016, and identify this source with a narrow-line active galactic nucleus with an extended Ly α halo at $z = 2.390$ that is a member of the structure around 53W002. Hence, SMM J17142+5016 is the first spectroscopically confirmed submillimeter-selected companion to a high-redshift radio galaxy. We discuss the OH-Airglow Suppression Spectrograph *JHK* spectrum of this galaxy and in addition present five new constraints on its spectral energy distribution longward of 1 μm , using these to estimate its bolometric luminosity as $\sim 8 \times 10^{12} L_{\odot}$, or a star formation rate of $\sim 10^3 M_{\odot} \text{yr}^{-1}$ if young stars provide the bulk of the luminosity. This result provides direct support for the statistical detection of overdensities of SCUBA galaxies around high-redshift radio galaxies and confirms theoretical predictions that SCUBA galaxies, as the progenitors of massive elliptical galaxies, should be strongly clustered in the highest density regions of the distant universe.

Subject headings: cosmology: observations — galaxies: evolution — galaxies: formation — galaxies: high-redshift — galaxies: individual (SMM J17142+5016)

On-line material: color figures

1. INTRODUCTION

The extreme luminosities exhibited by the dusty galaxy population that contributes the bulk of the extragalactic background in the far-infrared and submillimeter has emphasized the importance of dust-obscured activity in the early evolution of massive galaxies and black holes (Blain et al. 1999a; Cowie, Barger, & Kneib 2002). The majority of the dusty, active systems detected by Submillimetre Common-User Bolometer Array (SCUBA) appear to lie at $z > 1$; their typical bolometric luminosities are 10^{11} – $10^{13} L_{\odot}$, and their space densities are $\sim 10^{-4} \text{Mpc}^{-3}$, 2–3 orders of magnitude higher than similar luminosity galaxies at $z \sim 0$, indicating strong evolution of this population (Smail, Ivison, & Blain 1997; Lilly et al. 1999; Blain et al. 1999b; Cowie et al. 2002; Chapman et al. 2002a). However, little is known about the types of environment that these galaxies inhabit. Similar luminosity, dusty systems in the local universe are typically found in low-density regions, and they avoid the dense cores of rich clusters of galaxies (Tacconi et al. 2002). The situation is expected to be very different at high redshifts, where, if they truly represent the progenitors of massive elliptical galaxies, the SCUBA galaxies should be clustered around the highest density regions, which will subsequently evolve into the cores of rich clusters at the present day (Ivison et al. 2000a, hereafter I00a).

Because of the small samples available in the submillimeter waveband, observational evidence of this clustering is tentative at the present time (Scott et al. 2002; Webb et al. 2002). Nevertheless, there are suggestions that SCUBA galaxies are strongly clustered; in particular, associations of SCUBA galaxies with other classes of clustered high-redshift sources, such as Lyman break galaxies or X-ray sources, have been serendipitously found (Chapman et al. 2001; Ledlow et al. 2002; Almaini et al. 2002). A more direct approach to tackle this question has been undertaken by I00a in a targeted survey of regions around high-redshift, powerful active galactic nuclei (AGNs). These are expected to preferentially inhabit high-density regions in the early universe (e.g., West 1994), a prediction that has some observational support from the discovery of excesses of both extremely red objects and Ly α emitters around some high-redshift radio galaxies (e.g., Aragón-Salamanca et al. 1994; Lacy & Rawlings 1996; Pascarella et al. 1996a, hereafter P96a; Yamada et al. 1997; Keel et al. 1999; Venemans et al. 2002). The first results from the I00a survey show a significant overdensity of SCUBA galaxies around the signpost high-redshift AGNs, but confirming this association with redshifts for the SCUBA sources is very demanding.

One of the fields covered in the I00a survey is that surrounding the $z = 2.39$ steep-spectrum, narrow-line radio galaxy 53W002 (Windhorst et al. 1991; Windhorst, Keel, & Pascarella 1998). This region is especially interesting because it has been shown to contain an overdensity of compact, Ly α emission-line galaxies at $z \sim 2.4$ (P96a; Pascarella, Windhorst, & Keel 1998, hereafter P98; Keel et al. 1999, hereafter K99). Nine of these emission-line galaxies have been spectroscopically confirmed as companions to the radio galaxy, with a velocity dispersion of $\sim 400 \text{km s}^{-1}$ and a spatial extent of $\sim 4 \text{Mpc}$ (K99). In this paper we report on the SCUBA observations of the 53W002 field,

¹ Institute for Computational Cosmology, University of Durham, South Road, Durham DH1 3LE, UK.

² Astronomy Technology Centre, Royal Observatory, Blackford Hill, Edinburgh EH9 3HJ, UK.

³ Institute for Astronomy, University of Edinburgh, Blackford Hill, Edinburgh EH9 3HJ, UK.

⁴ Department of Physics and Astronomy, University of Alabama, Tuscaloosa, AL 35487.

⁵ Institute of Astronomy, University of Tokyo, Mitaka, Tokyo 181-0015, Japan.

which uncover four luminous, submillimeter galaxies. By matching the submillimeter source position using an astrometrically precise 1.4 GHz map, we show that one of these sources is coincident with an Ly α -selected galaxy at $z = 2.39$, confirming the presence of ultraluminous dusty galaxies in the overdense structure around 53W002 at a look-back time of 11 Gyr (we adopt a cosmology with $q_0 = 0.5$ and $H_0 = 50 \text{ km s}^{-1} \text{ Mpc}^{-1}$).

We discuss new and archival observations of the 53W002 field in the next section, present our analysis and results in § 3, discuss these in § 4, and give our conclusions in § 5.

2. OBSERVATIONS AND REDUCTION

2.1. Submillimeter Mapping

We observed a ~ 2.3 diameter field centered on 53W002 at 450 and 850 μm during 2001 March 3–6 using the SCUBA bolometer array (Holland et al. 1999) on the James Clerk Maxwell Telescope (JCMT).⁶ The conditions were good and stable for the four nights when data were taken, with an 850 μm opacity measured every hour of 0.12–0.23 for the first three nights, rising to 0.35 on the final night. Flux calibration used beam maps of Mars, and the nightly calibration factors were consistent at the 5% level (rms) at 850 μm .

To map the field, the secondary mirror followed a jiggle pattern designed to fully sample the image plane, chopping east-west by $30''$ at 7 Hz while the telescope nodded between the same positions every 16 s in an on-off-off-on pattern. The total exposure time was 33.3 ks. The 450 and 850 μm maps were created using SURF (Jenness & Lightfoot 1997). In order to extract reliable source positions and flux densities, the maps were deconvolved using the symmetric -1 , $+2$, -1 zero-flux beam (which arises from chopping and nodding) and a modified version of the CLEAN algorithm (Högbom 1974) as described by I00a. This process produces a restored map at the native resolution of the JCMT, $14''$ FWHM, but without the negative sidelobes from the chopping of bright sources.

2.2. Radio Mapping

The radio map of the 53W002 field from the National Radio Astronomy Observatory (NRAO) Very Large Array (VLA)⁷ is dominated by the 50 mJy central radio source (Windhorst et al. 1991, 1998) and seven bright nearby sources. The presence of these bright sources makes self-calibration of the radio data trivial but ultimately limits the dynamic range of the map in the vicinity of the radio source.

For these observations we employed B configuration, obtaining a total of 10.8 ks of useful integration on the 53W002 field during 2001 May 14 and 17. We scanned the amplitude/phase calibrator, 1725+455, every hour, and the flux scale was tied to 0137+331. To ameliorate the effects of bandwidth smearing, the data were taken and reduced in pseudocontinuum, spectral line mode, using 28 3.25 MHz dual-polarization channels centered at 1.4 GHz, with data recorded every 5 s. After editing and standard calibration of

the data (and their associated weights), using AIPS, the IMAGR task was used to map a $34' \times 34'$ field, with simultaneous imaging of 16 bright nearby sources identified from the NRAO VLA Sky Survey (Condon et al. 1998). Using these maps, made with ROBUST = 0 weighting of the visibilities, CLEAN boxes were positioned around obvious sources, and IMAGR was rerun with 5000 iterations of the CLEAN algorithm (Högbom 1974). The resulting CLEAN components were then used as a model for self-calibration (in phase only). The mapping was repeated, after checks on the CLEAN boxes, followed by a further self-calibration step to produce the final map. After correction for the primary beam response of the VLA antennas using PBCOR, the resulting map has a noise level of $30 \mu\text{Jy beam}^{-1}$, with a $5''.3 \times 3''.7$ beam.

2.3. Optical and Near-Infrared Imaging

Our analysis also exploits archival *Hubble Space Telescope* (HST) imaging of the 53W002 field in both the optical (WFPC2) and near-infrared (NICMOS). We retrieved recalibrated and reduced WFPC2 imaging of the field from the HST archive at ST-ECF,⁸ comprising three broadband exposures: 57.6 ks in F450W (B_{450}), 27.2 ks in F606W (V_{606}), and 20.4 ks in F814W (I_{814}), as well as a 40.5 ks exposure in the F410M medium band. The latter filter serves to isolate the Ly α emission line at $z \sim 2.4$. More information on these data is given in P96a and P98.

The acquisition and reduction of the NICMOS imaging of this field, in the F110W (J_{110}) and F160W (H_{160}) filters, are described in detail by Keel et al. (2002, hereafter K02). A total of 2.4 ks integration was obtained in each filter on two fields around 53W002 using the NIC 3 camera during the special NIC 3 campaign in 1999 January. These observations have a resolution of $0''.2$ FWHM and 3σ point-source sensitivities of $J_{110} \sim 24.3$ and $H_{160} \sim 23.9$.

While the NICMOS images have exquisite resolution, they cover only a small portion of the SCUBA map, so we have also obtained wider field K_s -band imaging covering the full map. These data were taken with the INGRID near-infrared imager (Packham et al. 2002) on the 4.2 m William Herschel Telescope.⁹ Our observations were obtained on the night of 2001 May 10 and consist of a total of 4.3 ks integration in the K_s filter in photometric conditions and $0''.6$ seeing. The reduction and calibration of these data uses the pipeline described in D. G. Gilbank, I. Smail, R. J. Ivison, & C. Packham (2003, in preparation).

2.4. Near-Infrared Spectroscopy

Near-infrared spectroscopy of several galaxies in the field of 53W002, in particular object No. 18, was obtained by Motohara et al. (2001a, 2001b). These observations used the newly commissioned OH-Airglow Suppression Spectrograph (OHS; Iwamuro et al. 2001) and Cooled Infrared Spectrograph and Camera for OHS (CISCO; Motohara et al. 2002) on the 8.2 m Subaru Telescope.¹⁰ More details of

⁸ Based on observations made with the *Hubble Space Telescope* obtained from the ESO/ST-ECF Science Archive Facility.

⁹ Based on observations made with the William Herschel Telescope operated on the island of La Palma by the Isaac Newton Group in the Spanish Observatorio del Roque de los Muchachos of the Instituto de Astrofísica de Canarias.

¹⁰ Based on data collected at Subaru Telescope, which is operated by the National Astronomical Observatory of Japan.

⁶ The JCMT is operated by the Joint Astronomy Centre on behalf of the United Kingdom Particle Physics and Astronomy Research Council (PPARC), the Netherlands Organisation for Scientific Research, and the National Research Council of Canada.

⁷ NRAO is operated by Associated Universities, Inc., under a cooperative agreement with the National Science Foundation.

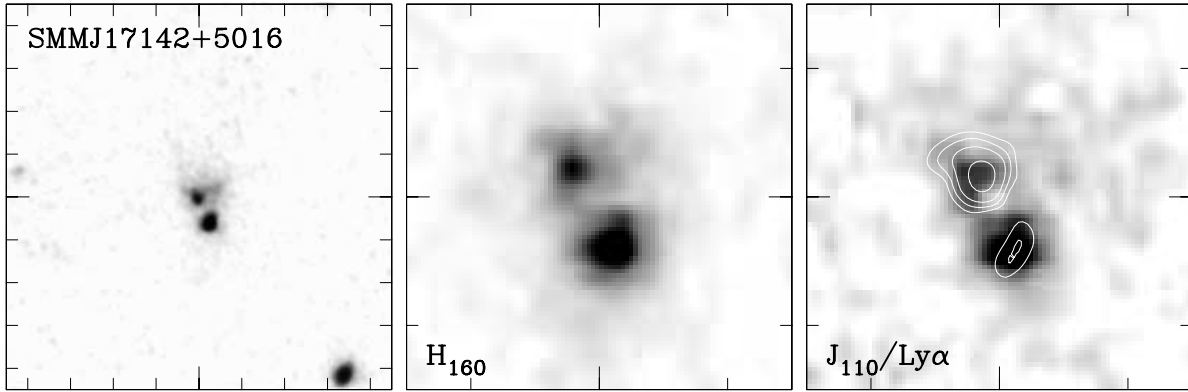


FIG. 1.—Three images demonstrating the varied morphology of SMM J17412+5016/No. 18 in the rest-frame optical/UV. *Left to right*: True-color representation constructed from the *HST*/WFPC2 $B_{450}V_{606}I_{814}$ imaging; an expanded view of the H_{160} image to better illustrate the morphology of the galaxy in the rest-frame optical; and a view that contrasts the morphology of the J_{110} -band, rest-frame near-UV continuum emission (shown as a gray scale) with the morphology in the F410M filter, which is dominated by the $\text{Ly}\alpha$ emission and is shown as a logarithmic contour plot. From these images we see that the optical counterpart to SMM J17412+5016 comprises a compact red component to the south and a more diffuse blue structure to the northeast with an extension to the west. At $z = 2.39$, the K -band magnitude of SMM J17142+5016/No. 18 corresponds to an apparent magnitude of $M_V \sim -23$; however, its present-day luminosity depends critically on the competing effects of current dust extinction and subsequent star formation, and hence the $z = 0$ absolute luminosity of this galaxy is extremely uncertain. The left panel is $9'' \times 9''$ (70 kpc at $z = 2.39$), while the middle and right panels are $3'' \times 3''$ each; all have north up and east to the left. [See the electronic edition of the *Journal* for a color version of this figure.]

the observations are given in Motohara et al. (2001b). The spectra cover the JHK bands in two configurations; in both instances the slit was placed at a P.A. of -35° and centered on the redder, southern component in the galaxy (Fig. 1).

The JH -band spectrum of No. 18 was obtained on the night of 1999 May 21, using OHS in the light path in front of CISCO to suppress the atmospheric OH emission. A total of 8 ks of data was acquired in $0''.6$ seeing as a series of 1 ks exposures, with the $5''$ nods along the slit between exposures. With a $0''.95$ wide slit, we obtain a resolution of ~ 200 in the middle of the H band. Atmospheric transmission corrections came from observations of SAO 30245, and wavelength calibration was obtained from the OH lines measured in observations without OHS. Checks of the instrument stability suggest that this calibration is good to less than 5 \AA .

The K -band spectroscopy was obtained on 1999 May 3–4 with just CISCO, at the Cassegrain focus, in $0''.4$ seeing and nonphotometric conditions. The $0''.7$ slit resulted in a resolution of ~ 430 at $2.2 \mu\text{m}$. A total of 4.8 ks of integration in 24×200 s exposures was obtained, nodding the telescope by $\sim 5''$ after every six exposures to allow for sky subtraction. Calibration of the atmospheric transmission came from observations of SAO 30082 taken immediately before the science frames on 1999 May 4, and wavelength calibration used the sky lines.

The spectroscopic data were reduced in a standard manner, including flat-fielding, sky subtraction, correction of bad pixels, and residual sky subtraction. The spectra of the SAO stars were used to correct for atmospheric extinction. Because the seeing was smaller than the slit width for both observations, we adopt a quarter of the slit width as our estimate of the absolute calibration error on our wavelength scale. This amounts to 22 \AA in the JH -band spectrum and 13 \AA in the K band. The spectra were flux calibrated using the broadband photometry of the source from Yamada et al. (2001) and Motohara et al. (2001b). A $1''.2 \times 2''.1$ aperture aligned with the slit was used in both cases. The final spectrum covering the JHK bands is shown in Figure 2, and

an initial analysis of this spectrum is described in Motohara et al. (2001a).

3. ANALYSIS AND RESULTS

We detect four significant sources in the $850 \mu\text{m}$ SCUBA map of the 53W002 field above a 4σ limit of 3.7 mJy ; this represents a modest excess over the blank-field expectation of two sources at this flux limit.¹¹ Unfortunately, the large JCMT beam means that it is impossible to reliably locate the source of this submillimeter emission. However, by exploiting the smaller beam and better absolute astrometric precision of our VLA map, we can provide a more accurate position for any submillimeter source detected at 1.4 GHz . These positions can then be compared to our near-infrared images, with a precision of $\sim 0''.5$, to search for optical/near-infrared counterparts.

Only one of the submillimeter sources is detectable at 1.4 GHz (in addition to 53W002), which we denote as SMM J17142+5016, with a nominal position from the $850 \mu\text{m}$ map of $17^{\text{h}}14^{\text{m}}12^{\text{s}}18 (\pm 0''.16)$, $+50^\circ 16'02''.8 (\pm 1''.8)$ (J2000). This galaxy has an $850 \mu\text{m}$ flux of $5.6 \pm 0.9 \text{ mJy}$ and a 3σ limit on the $450 \mu\text{m}$ flux of less than 30 mJy . It lies $1''.3$ from a $260 \pm 30 \mu\text{Jy}$ radio source (at $17^{\text{h}}14^{\text{m}}12^{\text{s}}040 [\pm 0''.028]$, $+50^\circ 16'02''.92 [\pm 0''.14]$) in the 1.4 GHz map. This radio source is also detected at 8.4 GHz with a flux of $37 \pm 7 \mu\text{Jy}$ (Fomalont et al. 2002), indicating a spectral slope of $\alpha = -1.1$. Using the positions of other radio sources in the INGRID field, we place the radio source within $1''.0$ of an optical galaxy (nominally at $17^{\text{h}}14^{\text{m}}11^{\text{s}}99$, $+50^\circ 16'02''.1$), identified as No. 18 in P96a. We conclude that No. 18 is the likely counterpart to SMM J17142+5016, and in the following discussion we identify the galaxy as SMM J17142+5016/No. 18.

¹¹ We also detect emission from 53W002 at lower significance, with an $850 \mu\text{m}$ flux of $3.1 \pm 0.9 \text{ mJy}$, consistent with the 3σ upper limit of less than 3.3 mJy from Hughes & Dunlop (1998).

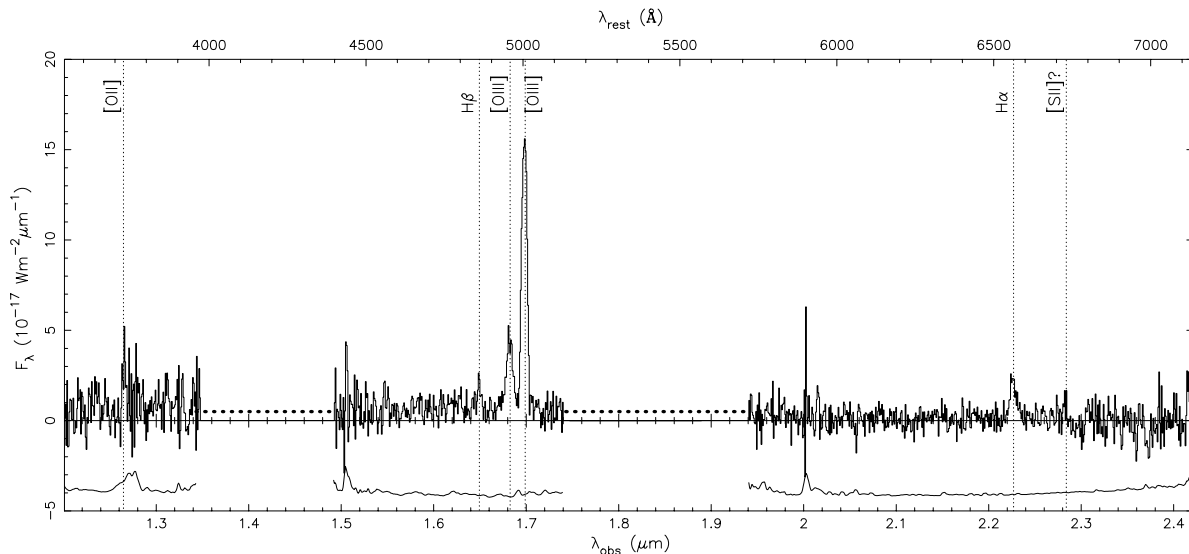


FIG. 2.—Combined *JHK* OHS spectrum of SMM J17142+5016/No. 18. We identify a number of prominent rest-frame optical emission lines; note the relative strength of the [O III] λ 5007 line, indicating that the galaxy is likely to host a Seyfert 2 nucleus. The top axis gives the rest-frame wavelength of these features, while the bottom axis is in the observed frame. The lower line shows the sky spectrum, and the heavy dotted lines indicate regions of the spectrum that are dominated by strong atmospheric absorption.

3.1. *SMM J17142+5016/No. 18*

SMM J17142+5016/No. 18 is one of the brightest of the ~ 14 Ly α emission-line sources detected at $z \sim 2.4$ in a narrowband imaging search around 53W002 (P96a; Pascarelle et al. 1996b; P98; K99; K02; Yamada et al. 2001; Motohara et al. 2001a, 2001b). We summarize some of the relevant published information on this galaxy here: the *HST* imaging of SMM J17142+5016/No. 18 shows that it is distinguished by its large angular size, $\sim 2''$, in contrast to the typically unresolved light profiles of the majority of the Ly α emitters in this region (P96a). SMM J17142+5016/No. 18 consists of a pair of components separated by $0''.6$ (4.7 kpc at $z = 2.39$); see Figure 1. The northeastern component has bluer colors and a more extended light profile than the southern component (whose intrinsic FWHM is only $0''.25$ in the I_{814} band, indicating a half-light radius of just 1 kpc at $z = 2.39$). The rest-frame UV spectrum published by P96a shows a strong but relatively narrow Ly α line, weak C IV λ 1549, and possibly N V λ 1239, confirming its redshift as $z = 2.393$. In conjunction with the preliminary analysis of the OHS near-infrared spectrum of this galaxy by Motohara et al. (2001a), the spectral properties are very similar to those of a Seyfert 2 galaxy. Deeper, ground-based Ly α imaging of this galaxy by K99 shows that it also possess a very extended Ly α halo, $\gtrsim 50$ kpc.

3.2. Morphology

Turning now to the new data presented in this paper, we note that the morphology of SMM J17142+5016/No. 18, showing two components separated by $\sim 1''$ and extended emission, is remarkably similar to that of other optically bright SCUBA galaxies, SMM J02399–0136 (a narrow-line, broad absorption line QSO at $z = 2.80$; Ivison et al. 1998), SMM J14011+0252 (a starburst galaxy at $z = 2.56$; Ivison et al. 2000b, 2001), and Westphal–MMD 11 (a submillimeter-bright Lyman break galaxy at $z = 2.98$; Chapman et al. 2002b). All of these

very luminous SCUBA galaxies also exhibit multiple components, apparent tidal features, and complex emission-line structures on scales of ~ 10 kpc. We compare the spatial distribution of the high surface brightness Ly α emission (from the F410M image) and UV continuum (given by the J_{110} band, although this includes a small contribution from [O II] λ 3727; Fig. 2) in the right panel of Figure 1. This shows that a large fraction of the Ly α emission from the system arises in the northern component, even though the underlying continuum in this feature is weak. This component may therefore represent either a lower mass companion, tidal debris, or scattered light from an obscured AGN. Unfortunately, the precision of the relative astrometry between our radio and near-infrared images precludes us more precisely locating the source of the radio (and hence submillimeter) emission in this system (cf. Ivison et al. 2001).

3.3. Rest-Frame UV/Optical Spectral Properties

We identify a number of strong emission lines in the OHS spectrum of SMM J17142+5016/No. 18 in Figure 2, including H α , H β , [O II] λ 3727, [O III] λ 4959, 5007, the signature of [N II] λ 6583 blended with H α , and perhaps [S II] λ 6731. The emission-line properties are listed in Table 1. The redshift for SMM J17142+5016/No. 18 is $z = 2.390 \pm 0.002$ from the H α line, compared to $z = 2.393$ from the peak of the Ly α line (P96a). This small offset may indicate the presence of absorption in the blue wing of the Ly α line, which would have been missed in the low signal-to-noise ratio spectrum shown in P96a. The small differences between redshifts from different lines in the *JH* and *K* bands are within the calibration uncertainties of the observations.

The OHS spectra show that the H α and [O III] emission is extended by $1''$ – $2''$ along the slit to the northwest from the compact, southern component. In addition, the [O III] λ 5007 line shows a velocity gradient of 200–300 km s $^{-1}$ across this extension. The relatively low resolution of the OHS observations means that, apart from the spatial

TABLE 1
SPECTRAL PROPERTIES OF SMM J17142+5016/No. 18

Line	λ_{obs} (Å)	λ_0 (Å)	z^a	Flux ($\times 10^{-19}$ W m $^{-2}$)	Comments
Ly α	4124.9	1215.7	2.393	4.7	K02
[O II].....	12651.5	3727.4	2.394	1.2 ± 0.2	
H β	16487.3	4861.3	2.392	0.54 ± 0.20	
[O III].....	16817.1	4959.0	2.391	3.22 ± 0.10	
[O III].....	16975.6	5006.9	2.390	10.5 ± 0.3	
H α	22260.1	6562.8	2.392	1.96 ± 0.05	Blended with [N II]
	22248.9	6562.8	2.390	1.4 ± 0.1	Deblended

^a Systematic uncertainties in the redshifts from the wavelength calibration are ± 0.004 for the J/H -band spectra and ± 0.002 for the K -band lines.

velocity gradient, none of the emission lines are resolved, with limits of $\sigma \lesssim 1500$ km s $^{-1}$ for lines in the JH band and $\sigma \lesssim 800$ km s $^{-1}$ for those in the K band. As an aside, we note that the galaxy lies outside the sensitive area of the CO line searches around 53W002 and so no useful dynamical information is currently available (Scoville et al. 1997; Alloin, Barvainis, & Guilloteau 2000).

The H α + [N II] flux measured from the OHS spectrum is $(1.96 \pm 0.05) \times 10^{-19}$ W m $^{-2}$. This compares to 6.3×10^{-19} W m $^{-2}$ from the narrowband imaging of K02, further strengthening the claim of a significant, spatially extended component to this line emission but also underlining the difficulty of extracting reliable line ratio estimates from the different published long-slit measurements. We estimate the contribution from the blended [N II] $\lambda 6583$ line to the H α in the long-slit spectrum by fitting a model with two Gaussian profiles, assuming both lines have the same FWHM, to the data. We derive a line ratio of [N II] $\lambda 6583$ /H α = 0.4 ± 0.1 , similar to that seen in normal star-forming galaxies. However, the low signal-to-noise ratio of the H β flux measurement precludes any detailed analysis of the reddening in this system.

The broadband colors of SMM J17142+5016/No. 18 listed in K02 appear unusual, being blue shortward of 2500 Å in the rest frame, $(B-I) = 1.3$, and comparatively red longward of this, $(I-K) = 3.1$ (K02; Yamada et al. 2001). The cause of this apparent reddening of the spectral energy distribution (SED) is the large contribution to broadband fluxes from redshifted Ly α and optical emission lines (Fig. 2). These contributions amount to 25% of the light in the B band (Ly α), 10% of the J -band flux ([O II] $\lambda 3727$), 45% in the H band (H β , [O III] $\lambda 4959$, 5007), and 30% in the K band (H α , [N II]). Correcting for this line emission we estimate the colors of the underlying continuum as $(B-I) = 1.6$, $(I-K) = 2.7$, $(J-H) = 1.3$, and $(H-K) = 0.6$. These colors are similar to those expected for a young stellar population at $z = 2.4$, although the absence of strong stellar absorption features in the rest-frame UV spectra (P96a; W. C. Keel 2002, private communication) suggests that there is a significant AGN contribution to the UV emission.

The rest-frame optical emission line ratios measured from the OHS spectrum of SMM J17142+5016/No. 18 also suggest the presence of an AGN. Motohara et al. (2001a) discuss the flux ratios for this galaxy on diagnostic diagrams for [O III] $\lambda 5007$ /H β , [O II] $\lambda 3727$ /[O III] $\lambda 5007$, and [N II] $\lambda 6583$ /H α . They conclude that the system has emission-line ratios similar to those seen in Seyfert 2 galaxies, although a low-metallicity starburst is also possible.

3.4. Far-Infrared/Radio Properties

In Figure 3 we compare the SED of SMM J17142+5016/No. 18 to well-studied SCUBA galaxies and other dusty, luminous galaxies. The galaxy's SED is typical of ultraluminous infrared galaxies and shows strong similarities to the $z = 3.39$ SCUBA-selected narrow-line Seyfert 1 galaxy SMM J09431+4700 (Ledlow et al. 2002). Taking the 850 μ m flux of SMM J17142+5016 and assuming a dust spectrum with $T_d = 38$ K and $\beta = 1.5$, we estimate a dust mass of $\sim 10^8 M_\odot$ and a bolometric luminosity of $(8 \pm 2) \times 10^{12} L_\odot$; this translates into a star formation rate for greater than $5 M_\odot$ stars of $\sim 750 M_\odot \text{ yr}^{-1}$ (Condon 1992), or $\sim 4 \times 10^3 M_\odot \text{ yr}^{-1}$ accounting for stars with masses of greater than $0.1 M_\odot$ using a Salpeter initial mass function.

We can also estimate the star formation rate in SMM J17142+5016 from the H α flux (Table 1; K02); this indicates an H α luminosity of $(0.3-1) \times 10^{36}$ W, suggesting a star formation rate in the range $10^2-10^3 M_\odot \text{ yr}^{-1}$ (Kennicutt 1983; Barbaro & Poggianti 1997). The contribution from any AGN-powered component of the line will bring this

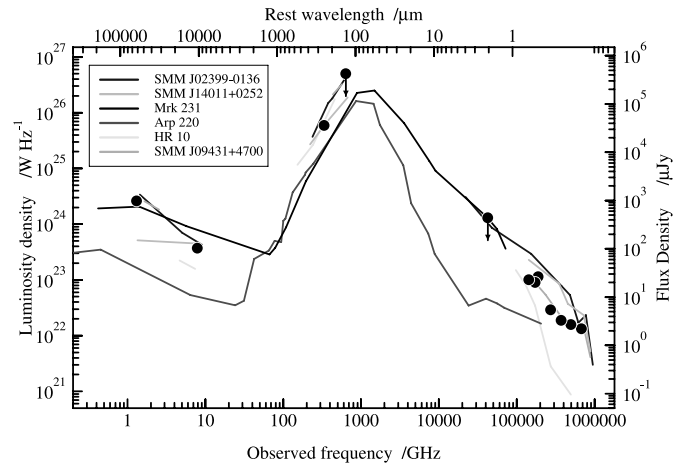


Fig. 3.—Comparison of the SED of SMM J17142+5016/No. 18 with a range of well-studied, luminous dusty galaxies at low and high redshifts. The SED appears to be very similar to that of SMM J09431+4700, an ultraluminous, narrow-line Seyfert 1 galaxy at $z = 3.39$ (Ledlow et al. 2002), or a lower luminosity analog of SMM J02399–0136 (Ivison et al. 1998). The rest-frame optical/UV photometry of SMM J17142+5016/No. 18 comes from K02, and we include a 3σ upper limit on the 7 μ m emission from the galaxy based on *Infrared Space Observatory* observations (W. C. Keel 2002, private communication). [See the electronic edition of the *Journal* for a color version of this figure.]

estimate down. Nevertheless, these measurements are far in excess of the estimated star formation rate based on the UV luminosity of $\sim 10 M_{\odot} \text{ yr}^{-1}$ (not accounting for any AGN contribution; P96a), indicating a dust-incurred deficit in the UV luminosity, which was already noted as a possible cause of the high Ly α equivalent width (K02; see also Taniguchi & Shioya 2000).

The radio counterpart to SMM J17412+5016 is unresolved at both 1.4 and 8.4 GHz, which places limits on its FWHM of $\lesssim 3''$, or $\lesssim 23$ kpc at $z = 2.39$. Using the 1.4 GHz and submillimeter fluxes, we can also estimate the radio-submillimeter spectral index, $\alpha_{850}^{1.4}$ (Carilli & Yun 1999, 2000), at $\alpha_{850}^{1.4} = 0.56 \pm 0.06$, which predicts $z = 1.0_{-0.4}^{+0.7}$ based on the Carilli & Yun (2000) models. This is at odds with the spectroscopic redshift of $z = 2.390$ (Table 1) and suggests that there is an additional contribution to the 1.4 GHz emission from the AGN (as also indicated by the steep radio spectrum at high frequencies). It will be important to place a precise limit on the bolometric luminosity of the AGN using the *Chandra* X-ray observations of this field and so constrain the relative contribution from the AGN and star formation to the dust emission from this galaxy (Bautz et al. 2000).

4. DISCUSSION

The properties of the components of SMM J17142+5016/No. 18 hint at a complex mix of AGN emission, star formation, dust obscuration, and scattered radiation, which is difficult to unravel. Let us take the southern component first: it is clear that this hosts an AGN, although there is also extended UV light detected from the host galaxy. Assuming the line ratios in the OHS spectrum (Fig. 2) are dominated by this component, then this source should be classified as a Seyfert 2 galaxy. In contrast, the northeastern component shows weak continuum and very strong Ly α emission (Fig. 1), suggesting that it may be a lower mass star-forming companion or tidal debris that is either locally ionized or illuminated by scattered light from the AGN. Support for the latter explanation comes from the apparent detection of C iv emission across this structure (K99; K02). A definitive conclusion about the nature of the northeastern component awaits the publication of higher quality, spatially resolved optical spectra of this structure.

Perhaps the most interesting feature of SMM J17142+5016/No. 18 is the extended Ly α halo around this galaxy (K99; K02), which may also have been seen in H α . This low surface brightness feature is on a much larger scale than the high surface brightness Ly α emission in Figure 1, extending out east from the galaxy at least $6''$ (50 kpc). This extended Ly α emission in the same direction as the extended [O III] $\lambda 5007$ line discussed earlier, with the velocity gradient then reflecting motion in the halo gas induced by a tidal interaction or a wind. The combination of strong submillimeter emission and an extended Ly α cloud is somewhat surprising, given the propensity for dust to absorb Ly α photons, although it has been seen before (Chapman et al. 2001, 2002a). Taniguchi & Shioya (2000) have suggested that this phenomenon arises from an extended superwind driven by a highly obscured starburst; the wind then shocks and ionizes the gas halo that surrounds the system. This model can explain several properties of these Ly α halos (although other processes are also feasible; see Chapman et al. 2001 and Francis et al. 2001) and hence deserves contin-

ued investigation, in particular studying the kinematics of the extended Ly α emission around SMM J17142+5016/No. 18 using an integral field spectrograph on an 8 m class telescope to confirm the dynamical signatures of a superwind.

Many of the characteristics of SMM J17142+5016/No. 18 are shared with other well-studied SCUBA galaxies (Ivison et al. 1998, 2000b): a disturbed morphology, an SED dominated by dust-reprocessed radiation, spectral signatures of a narrow-line AGN, and extended Ly α emission. The disturbed appearance of No. 18 sets it apart from the other (typically compact) Ly α -selected galaxies and AGNs around 53W002 and suggests that, as in local ultraluminous infrared galaxies (ULIRGs), it is the tidal disturbance of the gas reservoir within the galaxy due to gravitational interactions that is the root cause of the enhanced activity we see (Chapman et al. 2002b). Yamada et al. (2001) have argued that the Ly α -selected galaxies around 53W002 have characteristics similar to those seen in the wider Lyman break population, suggesting that perhaps ongoing major mergers are the events that set SCUBA galaxies apart from the broader population of star-forming systems at high redshifts. However, the presence of multiple components on 5–20 kpc scales in $\sim 30\%$ of the Lyman break population (Lowenthal et al. 1997), along with the lack of significant submillimeter emission from the majority of Lyman break galaxies (Chapman et al. 2000), indicates that the picture is not that simple.

Although the exact trigger of the ultraluminous activity may be ambiguous, it is also true that the power source for this behavior is similarly difficult to identify. The presence of an AGN in SMM J17142+5016/No. 18 obviously provides the opportunity for some fraction of its far-infrared luminosity to come from AGN-heated dust, but, as with $z \sim 0$ ULIRGs, it is difficult to disentangle the contributions from star formation and AGN heating to the overall SED. The existence of a large mass of dust, $10^8 M_{\odot}$, suggests that massive star formation has occurred in this galaxy, while the lack of X-ray detections for the general SCUBA population (Almaini et al. 2002) along with the constraints on AGN luminosities from a few well-studied SCUBA galaxies (e.g., Frayer et al. 1998; Bautz et al. 2000) both hint that only rarely does the AGN completely dominate the bolometric output from typical, luminous submillimeter-selected sources. Sensitive *Chandra* X-ray observations will help to resolve this issue for SMM J17142+5016/No. 18, while *Space Infrared Telescope Facility* mid-infrared observations will be key to disentangling the contributions from the AGN to the far-infrared emission from this galaxy. More generally, it is clear from the frequency of weak AGNs in SCUBA galaxies that some of the gas from the large disturbed reservoirs in these systems does find its way onto the central black hole, and given the easy availability of this fuel, the relatively modest luminosity AGNs that result may indicate that the black holes are of comparatively low mass (or suffer complex dust obscuration).

While the submillimeter luminosity of SMM J17142+5016/No. 18 sets it apart from the typical Lyman break galaxy (Chapman et al. 2000), its relative brightness in the optical/near-infrared wavebands also distinguishes it from the other three submillimeter sources in this field. All of these lack obvious counterparts to $K_s \sim 20$ and are undetectable in our radio map, although they should be detected close to the 3σ limit of our radio map if they follow the mean Carilli & Yun (2000) relation and lie at

$z \sim 2.4$. Therefore, if these SCUBA galaxies inhabit the same structure as SMM J17142+5016/No. 18, they must have lower dust temperatures (this will decrease their radio/far-infrared flux ratios, making them fainter in the radio) and are also likely to be more obscured. We speculate that these characteristics could arise if these submillimeter sources lack the AGN that is seen in SMM J17142+5016/No. 18. Alternatively, several (or all) of these sources could be unrelated to the structure around 53W002 and may lie at higher redshifts. Unfortunately, the limits placed on the sensitivity of the radio map of this region by the presence of 53W002 mean that improved radio positions for these other submillimeter sources are unlikely to become available in the near future.

From the current census of star formation activity in the structure around 53W002 it appears that SMM J17142+5016/No. 18 may be the dominant contributor (at least compared to the Ly α -selected population). We can thus estimate a crude lower limit to the star formation density in this region, taking the rate calculated above and assuming that SMM J17142+5016/No. 18 is the only ultraluminous galaxy in the entire structure, which conservatively contains a volume of $4 \times 4 \times 4 \text{ Mpc}^3$ (K99), giving a star formation density of $\gtrsim 60 M_{\odot} \text{ yr}^{-1} \text{ Mpc}^{-3}$. Even allowing for a significant contribution from the AGN to the bolometric luminosity, this is still 1–2 orders of magnitude higher than the mean star formation density at this epoch (Smail et al. 2002). This is a higher contrast than the 2–3 times overdensity of Ly α emitters in this region (several of which are also AGNs; K99) and suggests that vigorous, obscured star formation may be enhanced in the proto-cluster environment.

Finally, we note that the confirmation of a luminous SCUBA galaxy residing in a protocluster environment strengthens their association with the formation phase of the massive elliptical galaxies, which dominate rich clusters at the present day. The identification of this SCUBA source adds an ultraluminous infrared galaxy to the diverse zoo of galaxies inhabiting this structure at $z = 2.4$, which now includes an ultraluminous narrow-line AGN, a powerful radio galaxy, two broad-line AGNs, and a large population of Ly α -emitting galaxies. If these various types of activity are related through a single evolutionary cycle, then envi-

ronments such as that studied here may provide the best insights into the details of their relationships.

5. CONCLUSIONS

We have identified the first spectroscopically confirmed SCUBA companion to a high-redshift radio galaxy. This is SMM J17142+5016/No. 18, which lies 330 kpc (42'') and $\lesssim 300 \text{ km s}^{-1}$ offset in velocity from the steep-spectrum radio galaxy 53W002 at $z = 2.39$. The rest-frame optical morphology of this galaxy is strongly reminiscent of other well-studied SCUBA galaxies, showing merger/tidal features (Ivison et al. 1998, 2000b). We present an OHS near-infrared spectrum of this galaxy, which probes the rest-frame optical spectral properties, as well as a number of long-wavelength constraints on the form of its SED. These show that SMM J17142+5016/No. 18 is a radio-quiet, narrow-line AGN with a bolometric luminosity of $(8 \pm 2) \times 10^{12} L_{\odot}$ and an inferred star formation rate of $\sim 10^3 M_{\odot} \text{ yr}^{-1}$. The galaxy is also surrounded by an extended emission-line halo (seen in Ly α and H α). These halos are being uncovered in an increasing number of dusty, star-forming galaxies at high redshifts and may signify the presence of starburst-driven superwinds in these systems (Chapman et al. 2001, 2002a; Taniguchi & Shioya 2000). These intense winds and the strong radiation fields produced by this activity will have profound consequences for the evolution of any other galaxies in close proximity to the SCUBA galaxies.

We thank Harald Kuntschner and Graham Smith for undertaking the INGRID observations of this field, Fumihide Iwamuro and Toshinori Maihara for obtaining the OHS spectra of SMM J17142+5016/No. 18, Clare Jenner for help with the SCUBA survey, and Ian Waddington for the NICMOS imaging. We are indebted to all staff members of the Subaru telescope, NAOJ, who helped with the OHS observations. We thank the referee for a quick and concise report. We acknowledge useful conversations with Andrew Blain, Scott Chapman, Len Cowie, Cedric Lacey, and Alice Shapley, as well as support from the Royal Society (I. R. S.), the Leverhulme Trust (D. G. G., I. R. S.), and PPARC (J. S. D., J. A. S.).

REFERENCES

- Alloin, D., Barvainis, R., & Guilloteau, S. 2000, *ApJ*, 528, L81
 Almaini, O., et al. 2002, *MNRAS*, submitted
 Aragón-Salamanca, A., Ellis, R. S., Schwartzenberg, J.-M., & Bergeron, J. A. 1994, *ApJ*, 421, 27
 Barbaro, G., & Poggianti, B. M. 1997, *A&A*, 324, 490
 Bautz, M. W., Malm, M. R., Baganoff, F. K., Ricker, G. R., Canizares, C. R., Brandt, W. N., Hornschemeier, A. E., & Garmire, G. P. 2000, *ApJ*, 543, L119
 Blain, A. W., Kneib, J.-P., Ivison, R. J., & Smail, I. 1999a, *ApJ*, 512, L87
 Blain, A. W., Smail, I., Ivison, R. J., & Kneib, J.-P. 1999b, *MNRAS*, 302, 632
 Carilli, C. L., & Yun, M. S. 1999, *ApJ*, 513, L13
 ———. 2000, *ApJ*, 530, 618
 Chapman, S. C., Blain, A. W., Ivison, R. J., & Smail, I. 2002a, *Nature*, submitted
 Chapman, S. C., Lewis, G. F., Scott, D., Richards, E., Borys, C., Steidel, C. C., Adelberger, K. L., & Shapley, A. E. 2001, *ApJ*, 548, L17
 Chapman, S. C., Shapley, A., Steidel, C., & Windhorst, R. 2002b, 572, L1
 Chapman, S. C., et al. 2000, *MNRAS*, 319, 318
 Condon, J. J. 1992, *ARA&A*, 30, 575
 Condon, J. J., Cotton, W. D., Griesen, E. W., Yin, Q. F., Perley, R. A., Taylor, G. B., & Broderick, J. J. 1998, *AJ*, 115, 1693
 Cowie, L. L., Barger, A. J., & Kneib, J.-P. 2002, *AJ*, 123, 2197
 Fomalont, E. B., Kellermann, K. I., Partridge, R. B., Windhorst, R. A., & Richards, E. A. 2002, *AJ*, 123, 2402
 Francis, P. J., et al. 2001, *ApJ*, 554, 1001
 Frayer, D. T., Ivison, R. J., Scoville, N. Z., Yun, M., Evans, A. S., Smail, I., Blain, A. W., & Kneib, J.-P. 1998, *ApJ*, 506, L7
 Högbom, J. A. 1974, *A&AS*, 15, 417
 Holland, W. S., et al. 1999, *MNRAS*, 303, 659
 Hughes, D. H., & Dunlop, J. S. 1998, in *ASP Conf. Ser. 156, Highly Redshifted Radio Lines*, ed. C. Carilli et al. (San Francisco: ASP), 99
 Ivison, R. J., Dunlop, J. S., Smail, I., Dey, A., Graham, J. R., & Liu, M. C. 2000a, *ApJ*, 542, 27 (100a)
 Ivison, R. J., Smail, I., Barger, A., Kneib, J.-P., Blain, A. W., Owen, F. N., Kerr, T. H., & Cowie, L. L. 2000b, *MNRAS*, 315, 209
 Ivison, R. J., Smail, I., Frayer, D. T., Kneib, J.-P., & Blain, A. W. 2001, *ApJ*, 561, L45
 Ivison, R. J., Smail, I., Le Borgne, J.-F., Blain, A. W., Kneib, J.-P., Bézecourt, J., Kerr, T. H., & Davies, J. K. 1998, *MNRAS*, 298, 583
 Iwamuro, F., Motohara, K., Maihara, T., Hata, R., & Harashima, T. 2001, *PASJ*, 53, 355
 Jenness, T., & Lightfoot, J. F. 1997, in *ASP Conf. Ser. 145, Astronomical Data Analysis Software and Systems VII*, ed. R. Albrecht et al. (San Francisco: ASP), 216
 Keel, W. C., Cohen, S. H., Windhorst, R. A., & Waddington, I. 1999, *AJ*, 118, 2547 (K99)

- Keel, W. C., Wu, W., Waddington, I., Windhorst, R. A., & Pascarelle, S. M. 2002, *AJ*, 123, 3041 (K02)
- Kennicutt, R. C., Jr. 1983, *ApJ*, 272, 54
- Lacy, M., & Rawlings, S. 1996, *MNRAS*, 280, 888
- Ledlow, M., Smail, I., Owen, F. N., Keel, W. C., Ivison, R. J., & Morrison, G. E. 2002, *ApJ*, 577, L79
- Lilly, S. J., Eales, S. A., Gear, W. K. P., Hammer, F., Le Fèvre, O., Crampton, D., Bond, J. R., & Dunne, L. 1999, *ApJ*, 518, 641
- Lowenthal, J. D., et al. 1997, *ApJ*, 481, 673
- Motohara, K., Yamada, T., Iwamuro, F., & Maihara, T. 2001a, in *ASP Conf. Ser. 245, Astrophysical Ages and Timescales*, ed. T. von Hippel, C. Simpson, & N. Manset (San Francisco: ASP), 634
- Motohara, K., et al. 2001b, *PASJ*, 53, 459
- . 2002, *PASJ*, 54, 315
- Packham, C., et al. 2002, *MNRAS*, submitted
- Pascarelle, S. M., Windhorst, R. A., Driver, S. P., Ostrander, E. J., & Keel, W. C. 1996a, *ApJ*, 456, L21 (P96a)
- Pascarelle, S. M., Windhorst, R. A., & Keel, W. C. 1998, *AJ*, 116, 2659 (P98)
- Pascarelle, S. M., Windhorst, R. A., Keel, W. C., & Odewahn, S. C. 1996b, *Nature*, 383, 45
- Scott, S. E., et al. 2002, *MNRAS*, 331, 817
- Scoville, N. Z., Yun, M. S., Windhorst, R. A., Keel, W. C., & Armus, L. 1997, *ApJ*, 485, L21
- Smail, I., Ivison, R. J., & Blain, A. W. 1997, *ApJ*, 490, L5
- Smail, I., Ivison, R. J., Blain, A. W., & Kneib, J.-P. 2002, *MNRAS*, 331, 495
- Tacconi, L. J., Genzel, R., Lutz, D., Rigopoulou, D., Baker, A. J., Iserlohe, C., & Tecza, M. 2002, *ApJ*, 580, 73
- Taniguchi, Y., & Shioya, Y. 2000, *ApJ*, 532, L13
- Venemans, B. P., et al. 2002, *ApJ*, 569, L11
- Webb, T., et al. 2002, *ApJ*, submitted
- West, M. J. 1994, *MNRAS*, 268, 79
- Windhorst, R. A., Keel, W. C., & Pascarelle, S. M. 1998, *ApJ*, 494, L27
- Windhorst, R. A., et al. 1991, *ApJ*, 380, 362
- Yamada, T., Tanaka, I., Aragon-Salamanca, A., Kodama, T., Ohta, K., & Arimoto, N. 1997, *ApJ*, 487, L125
- Yamada, T., et al. 2001, *PASJ*, 53, 1119